

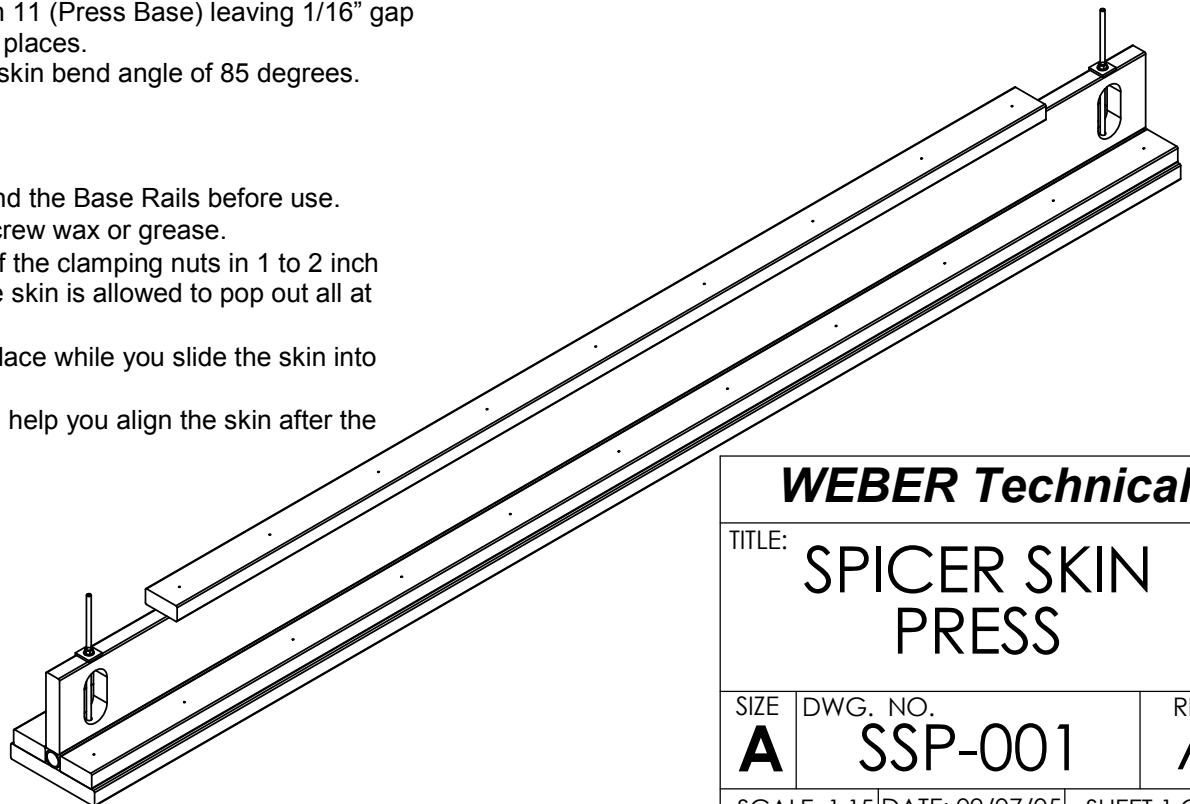
# ASSEMBLY INSTRUCTIONS

REVISIONS		DATE
REV.	DESCRIPTION	
A	INITIAL RELEASE	

1. Select the straightest lumber possible.
  2. Drill and cut 2 1/2" x 3" long slots into Item 7 (2 x 8 Beam) in locations shown.  
Bore 1/2" dia hole through Item 7 (Beam) in location shown. Hole should continue through slot cut in previous step.
  3. Drill 3/16" dia holes through Item 8 (1 1/4" EMT metal conduit) in locations shown, 9 places. (Next step is optional) counter bore on one side with 3/8" dia hole. This will allow the screw to capture the pipe on the inside rather than the outside of the pipe. If you choose not to you will have to grind and smooth the screw heads to the surface of the pipe. Drill 1/2" dia holes in Item 8 (EMT conduit) in locations shown.
  4. Using Item 6 (#6 wood screws) secure Item 8 (Conduit) to the bottom edge and on center of Item 7 (Beam) as shown in assembly detail.
  5. Center Item 9 (2 x 4 Cap) on top edge of Item 7 (Beam) and secure using Item 6 (#6 wood screws) as shown.
  6. Drill 1/2" dia holes into Item 11 (2 x 10 Press Base) in locations shown.
  7. Drill and insert Item 5 (Drop-In Anchor) into concrete floor using 1/2" diameter holes in Item 11 (Base) for location, 2 places.
  8. Secure Item 4 (3/8 - 16 All Thread) into Item 5, 2 places.
  9. Place Item 11 (Base) over Item 4 through the previously drilled 1/2" diameter holes. Position press rail assembly over Item 4 so as to rest on top of Item 11 (Press Base).
  10. Located and secure Item 10 (Base Side Rails) to Item 11 (Press Base) leaving 1/16" gap between Item 8 (EMT Conduit) and the Base Rails, 2 places.
- NOTE: This dimension may vary. Adjust to achieve final skin bend angle of 85 degrees.
11. Add hardware Items 1,2,3 as shown in assembly.

## TIPS:

- Remove all burrs and dings in both the conduit and the Base Rails before use.
- Lubricate both the conduit and Base Rails with screw wax or grease.
- When removing skin from press slowly back off of the clamping nuts in 1 to 2 inch increments and pull skin up between steps. If the skin is allowed to pop out all at once it will most likely bend.
- Use 2x4 blocks on the end to keep the beam in place while you slide the skin into position.
- Mark 1" on both sides of skin centerline. This will help you align the skin after the conduit covers up your centerline.



**WEBER Technical**

TITLE: **SPICER SKIN PRESS**

SIZE <b>A</b>	DWG. NO. <b>SSP-001</b>	REV <b>A</b>
------------------	----------------------------	-----------------

SCALE: 1:15 | DATE: 09/07/05 | SHEET 1 OF 7

5

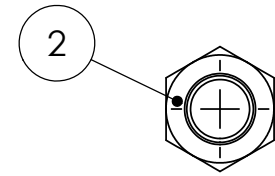
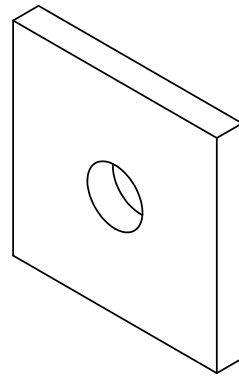
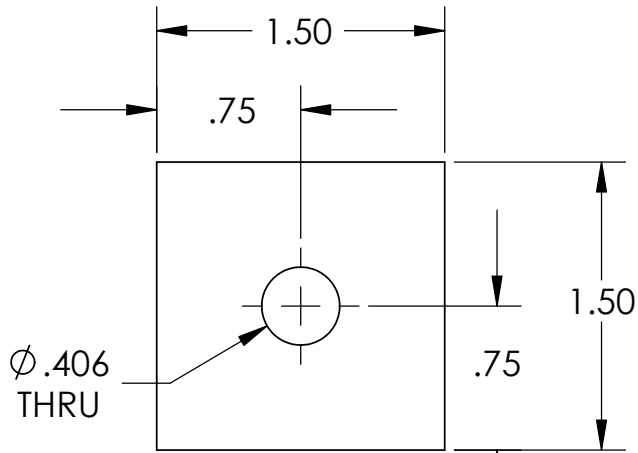
4

3

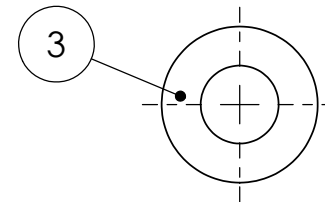
2

1

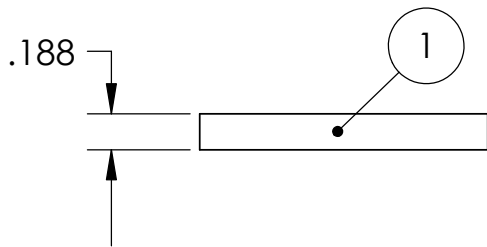
REVISIONS		
REV.	DESCRIPTION	DATE
A	INITIAL RELEASE	



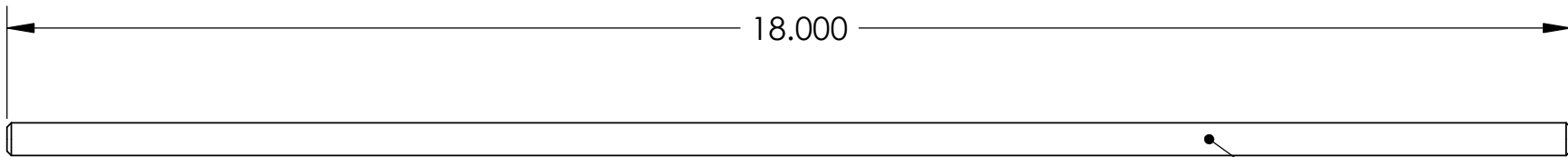
**3/8 - 16 NUT**  
2 REQUIRED  
SCALE - 1:1



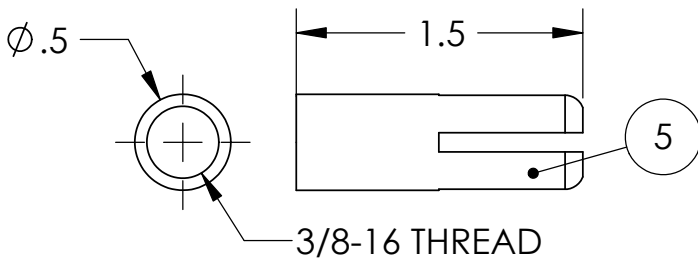
**3/8" WASHER**  
2 REQUIRED  
SCALE - 1:1



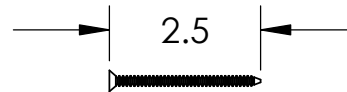
**CRUSH PLATE**  
MAKE FROM .1875 THICK 6061-T6 AL  
2 REQUIRED  
SCALE - 1:1



**3/8-16 THREADED ROD**  
2 REQUIRED (MCMASTER P/N 98837A031 CUT IN HALF)  
SCALE - 1:2



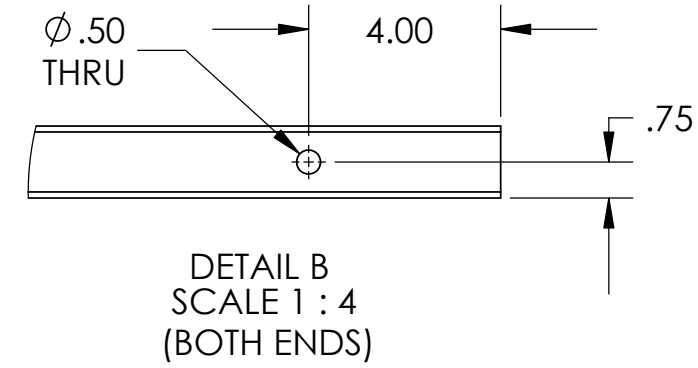
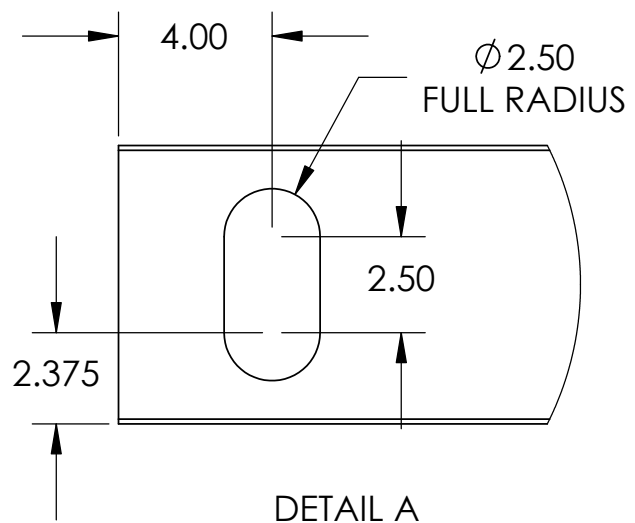
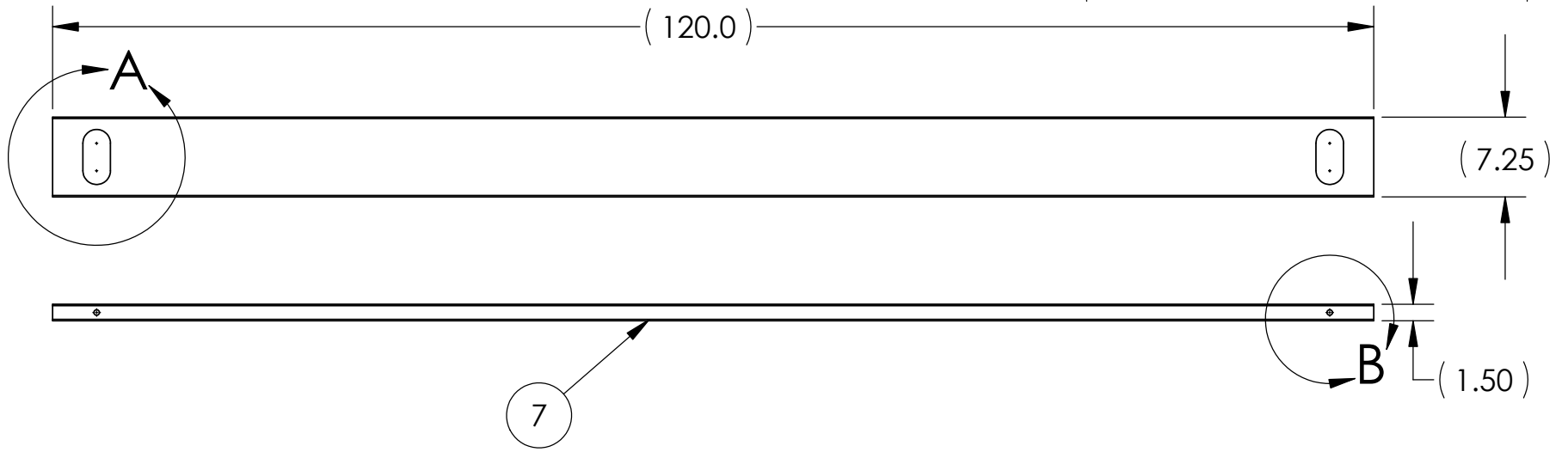
**3/8-16 DROP-IN ANCHOR**  
2 REQUIRED (MCMASTER P/N 97082A031)  
SCALE - 1:1



**2 1/2" WOOD SCREW #6**  
40 REQUIRED  
SCALE - 1:1

<b>WEBER Technical</b>		
TITLE: <b>HARDWARE - SKIN PRESS</b>		
SIZE <b>A</b>	DWG. NO. <b>SSP-002</b>	REV <b>A</b>
SCALE: 1:10	DATE: 09/07/05	SHEET 2 OF 4

REVISIONS		DATE
REV.	DESCRIPTION	
A	INITIAL RELEASE	



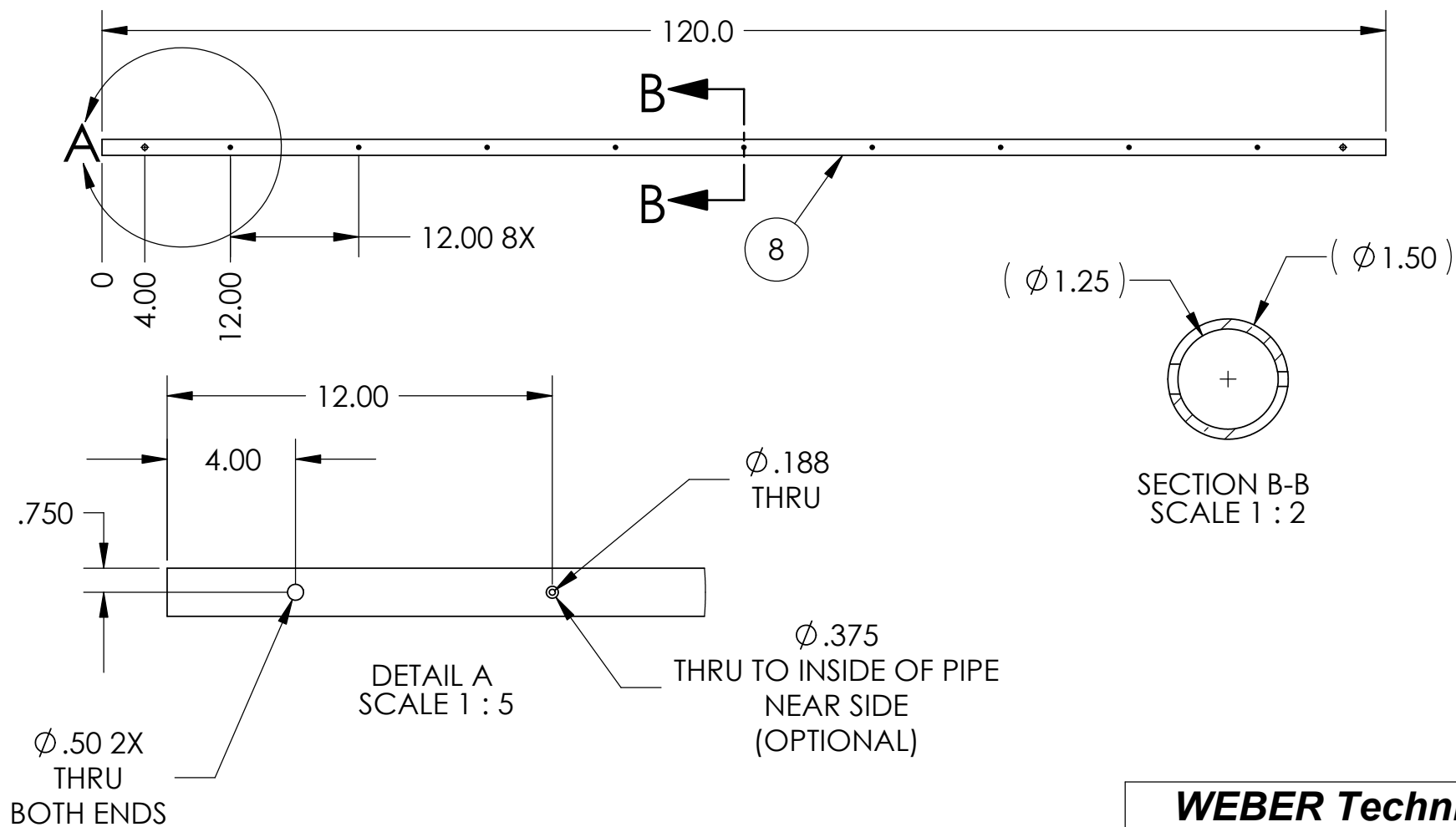
**WEBER Technical**

TITLE:  
**2 X 8 X 10' BEAM  
SPICER PRESS**

SIZE <b>A</b>	DWG. NO. <b>SSP-003</b>	REV <b>A</b>
SCALE: 1:10	DATE: 09/07/05	SHEET 3 OF 7

NOTE:  
 REMOVE ALL BURRS AND POLISH CONDUIT SURFACE  
 BEFORE MOUNTING. FAILURE WILL RESULT IN DEFORMITIES IN SKIN.

REVISIONS		DATE
REV.	DESCRIPTION	
A	INITIAL RELEASE	



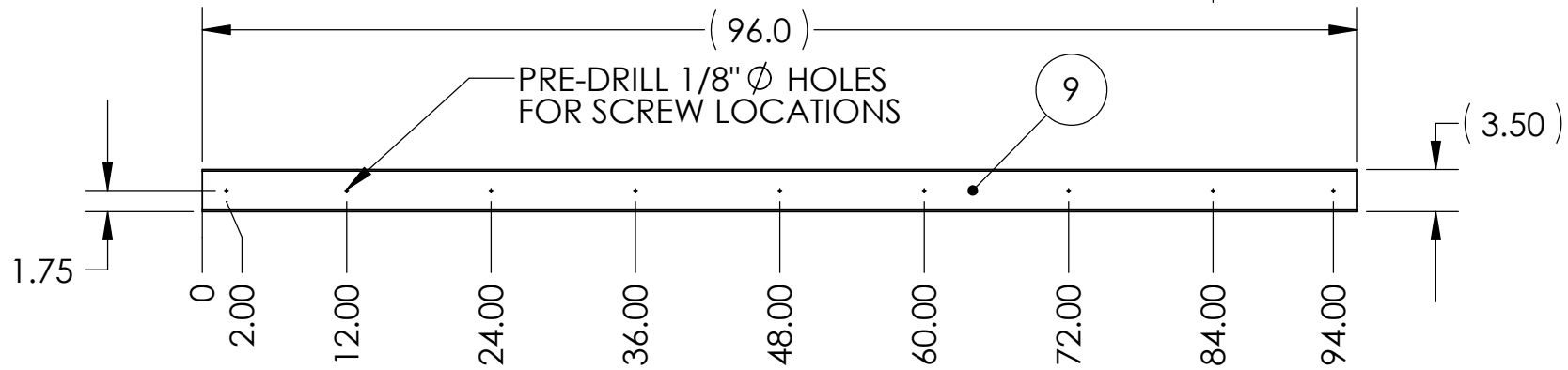
**WEBER Technical**

TITLE:  
**1 1/4" EMT CONDUIT  
 SPICER PRESS**

SIZE <b>A</b>	DWG. NO. <b>SSP-004</b>	REV <b>A</b>
------------------	----------------------------	-----------------

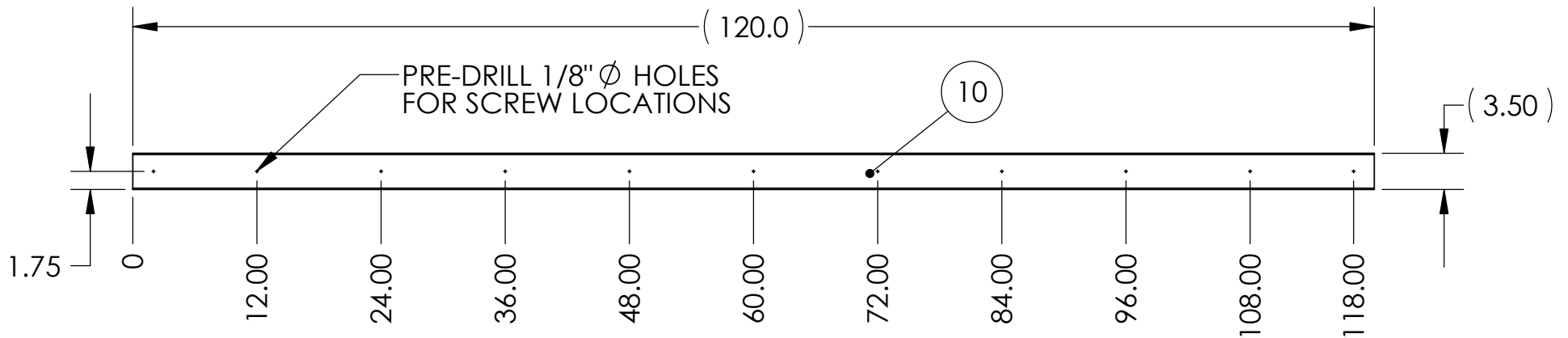
SCALE: 1:10 | DATE: 09/07/05 | SHEET 4 OF 7

REVISIONS		
REV.	DESCRIPTION	DATE
A	INITIAL RELEASE	



### 2x4x8 BEAM CAP

1 REQUIRED  
SCALE - 1:15



### 2x4x10 BASE RAILS

2 REQUIRED  
SCALE - 1:15

**WEBER Technical**

TITLE:

**2 x 4 CAP & RAILS  
SPICER PRESS**

SIZE  
**A**

DWG. NO.  
**SSP-005**

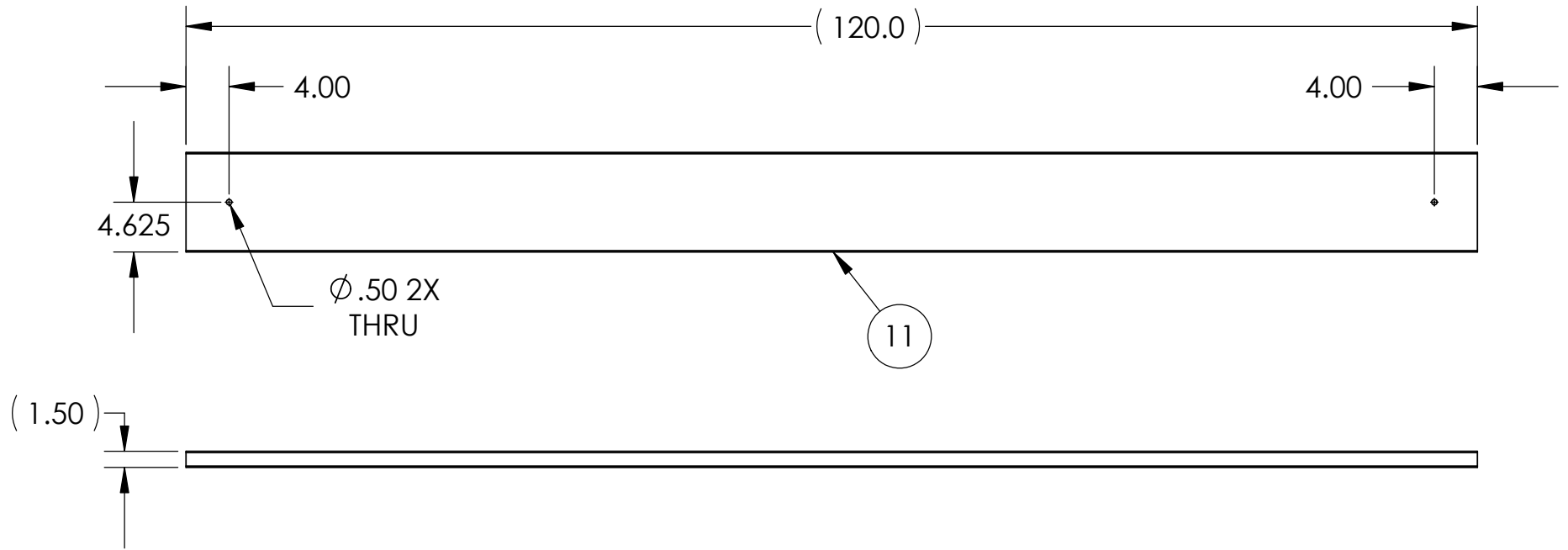
REV  
**A**

SCALE: 1:10

DATE: 09/07/05

SHEET 5 OF 7

REVISIONS		
REV.	DESCRIPTION	DATE
A	INITIAL RELEASE	



**WEBER Technical**

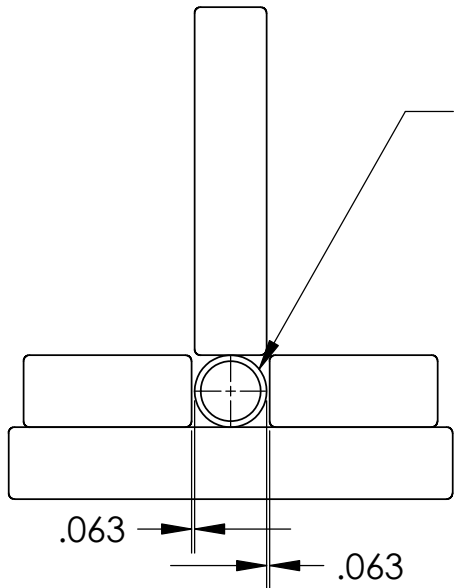
TITLE:  
**2x10x10' BASE  
 SPICER PRESS**

SIZE <b>A</b>	DWG. NO. <b>SSP-006</b>	REV <b>A</b>
------------------	----------------------------	-----------------

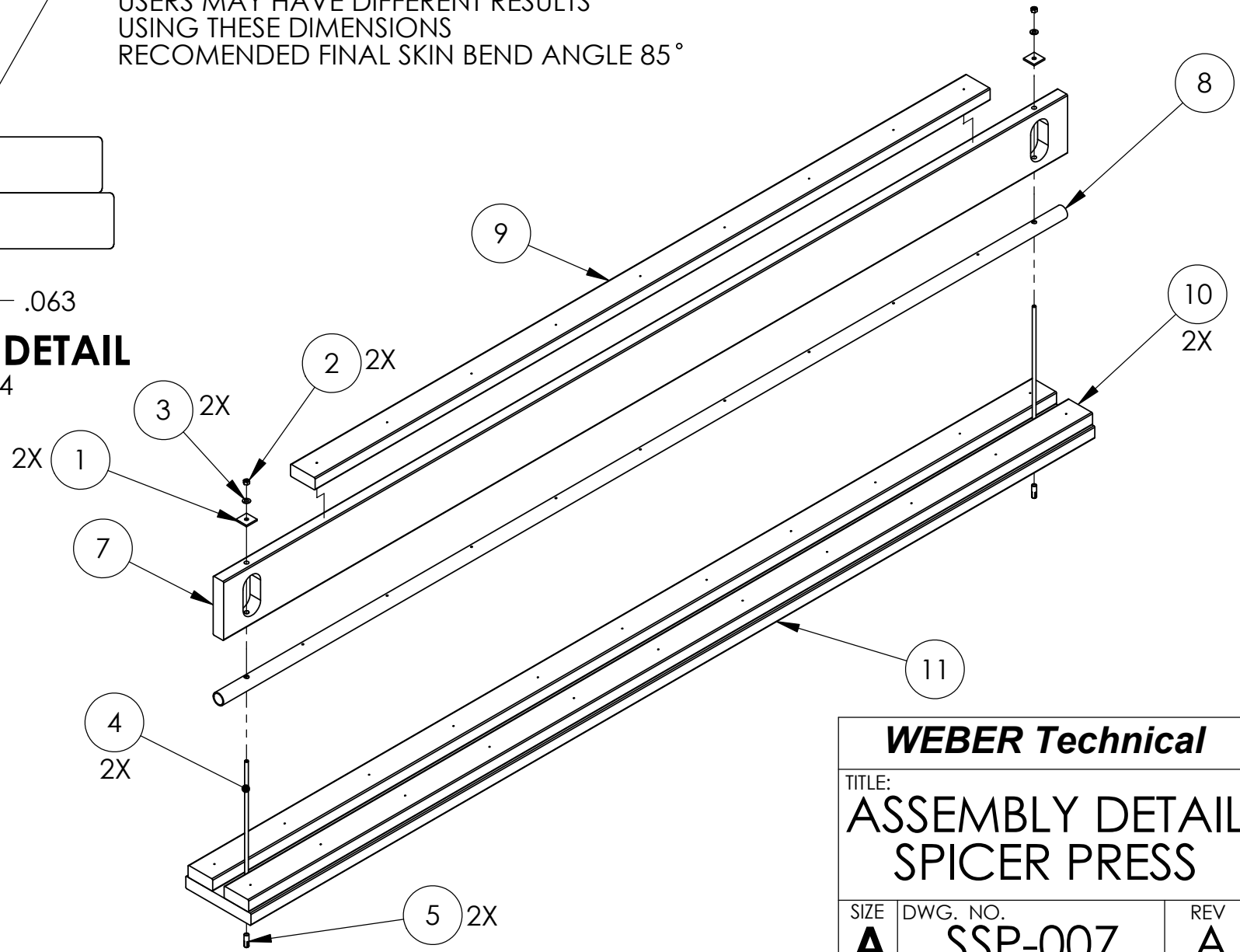
SCALE: 1:10 | DATE: 09/07/05 | SHEET 6 OF 7

REVISIONS		
REV.	DESCRIPTION	DATE
A	INITIAL RELEASE	

DISTANCE FROM PIPE OUTSIDE DIAMETER TO BASE RAIL MAY VARY  
 USERS MAY HAVE DIFFERENT RESULTS  
 USING THESE DIMENSIONS  
 RECOMENDED FINAL SKIN BEND ANGLE 85°



**PIPE TO RAIL DETAIL**  
 SCALE - 1:4



**WEBER Technical**

TITLE:  
**ASSEMBLY DETAIL  
 SPICER PRESS**

SIZE <b>A</b>	DWG. NO. <b>SSP-007</b>	REV <b>A</b>
SCALE: 1:10	DATE: 09/07/05	SHEET 7 OF 7